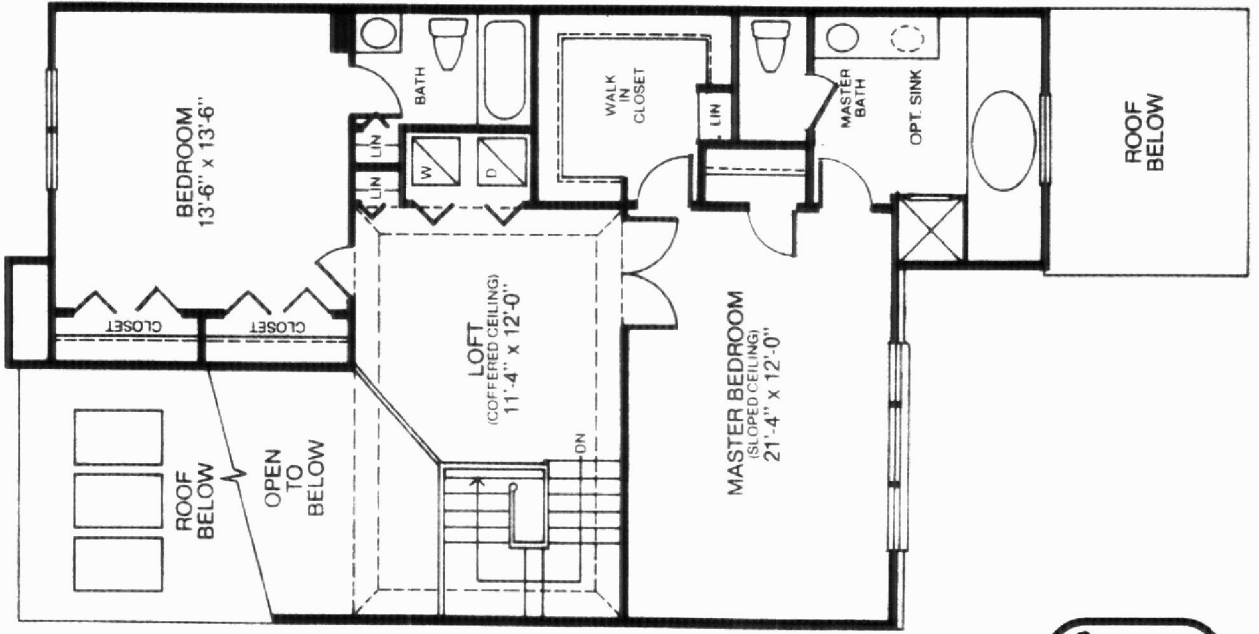
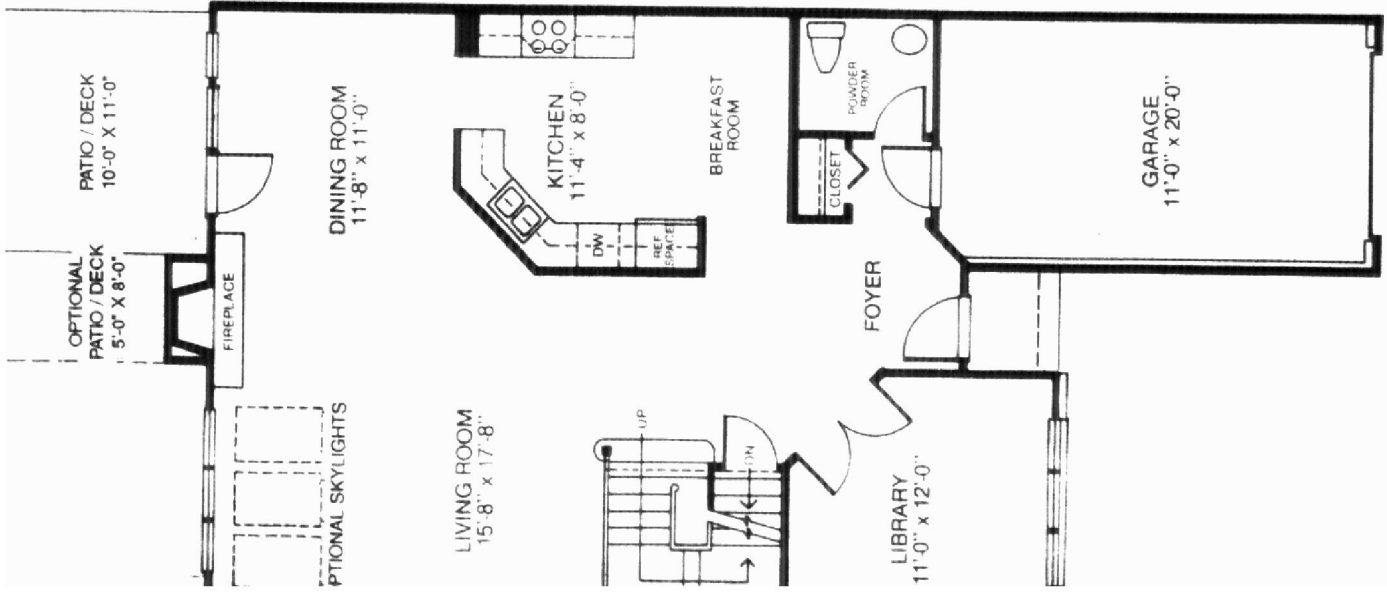


# The Christie I

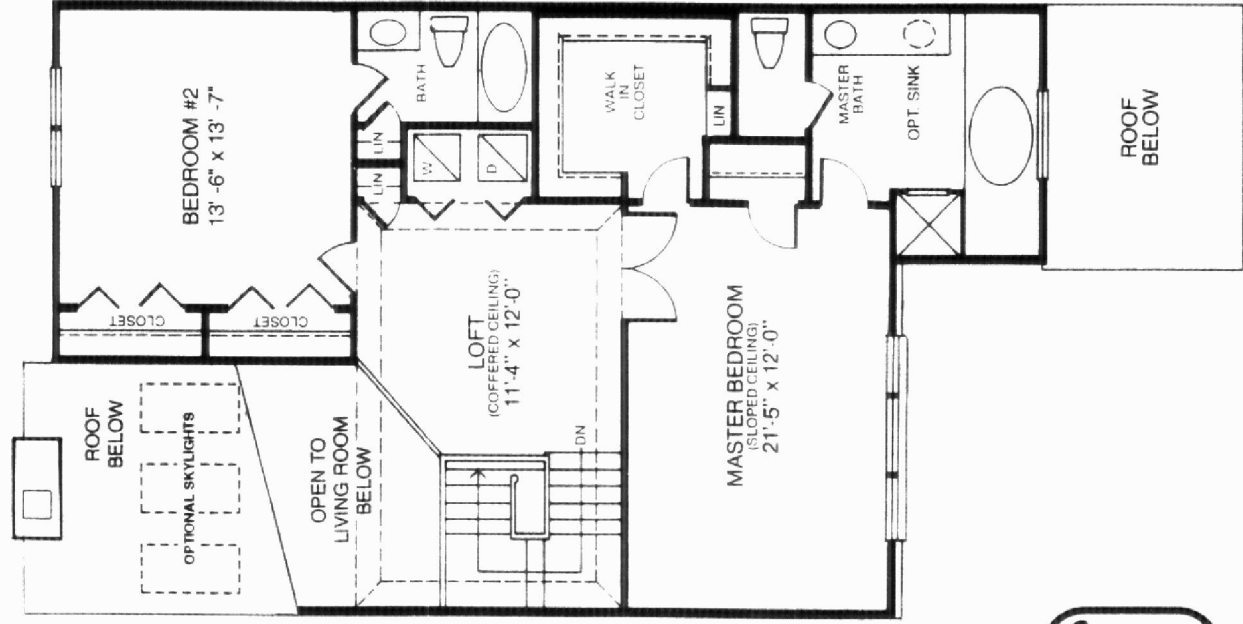


SALES OFFICE  
 201/331-1100

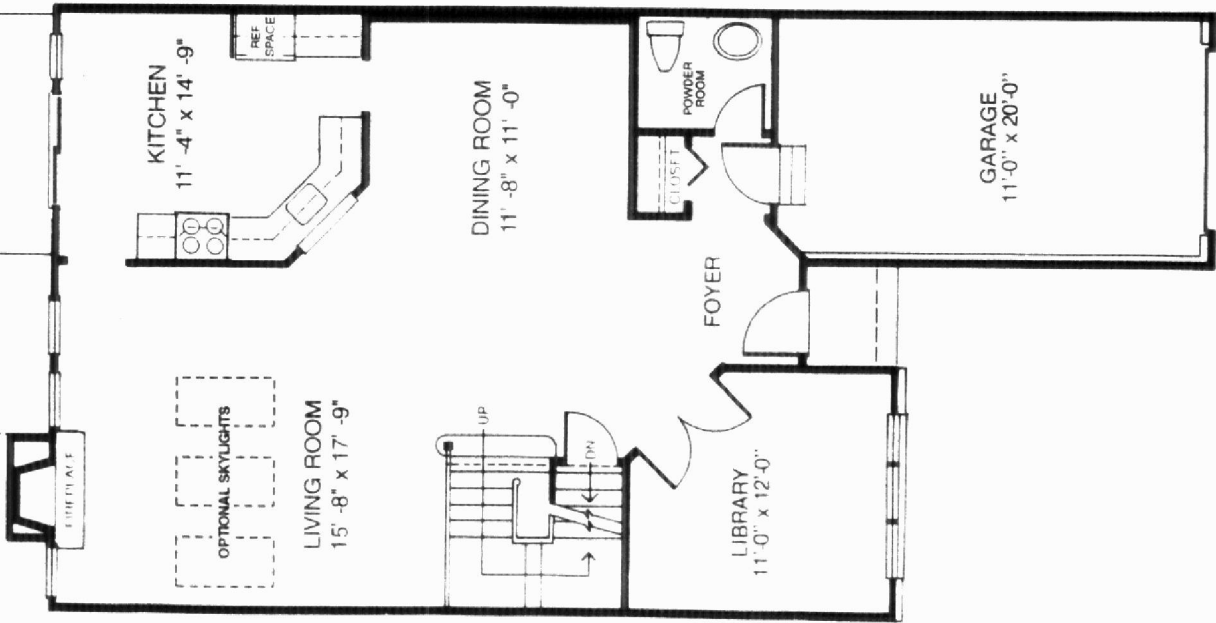
Dimensions, positions, locations and  
 on details are approximate and  
 to change without notice

Square Feet 2130

# The Christie II



SECOND FLOOR



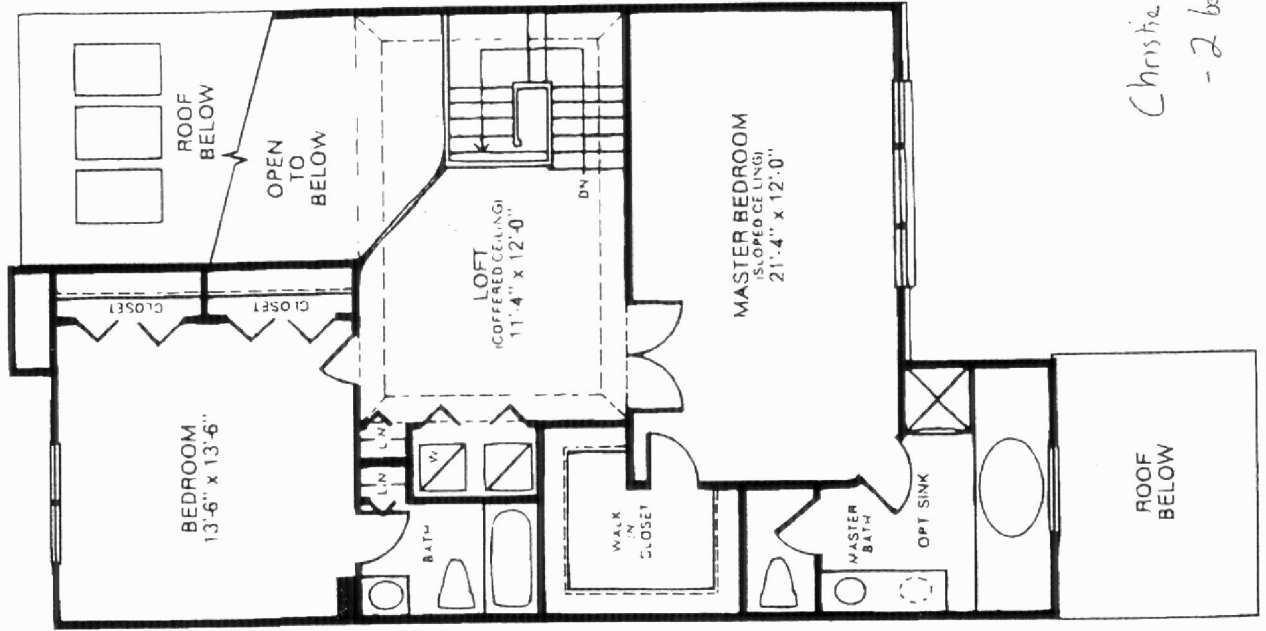
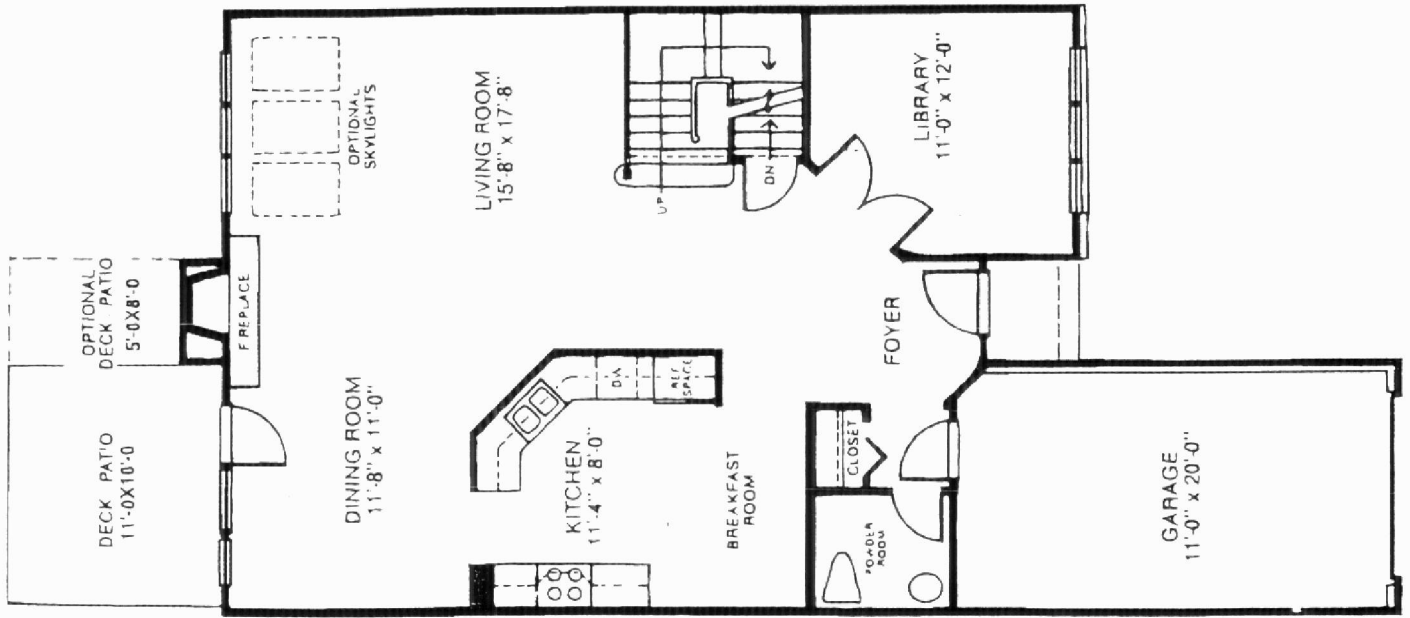
FIRST FLOOR



**SALES OFFICE**  
 201/331-1100

All dimensions, positions, locations and elevation details are approximate and subject to change without notice.

Square Feet 2130



Christie  
- 2 bedrooms