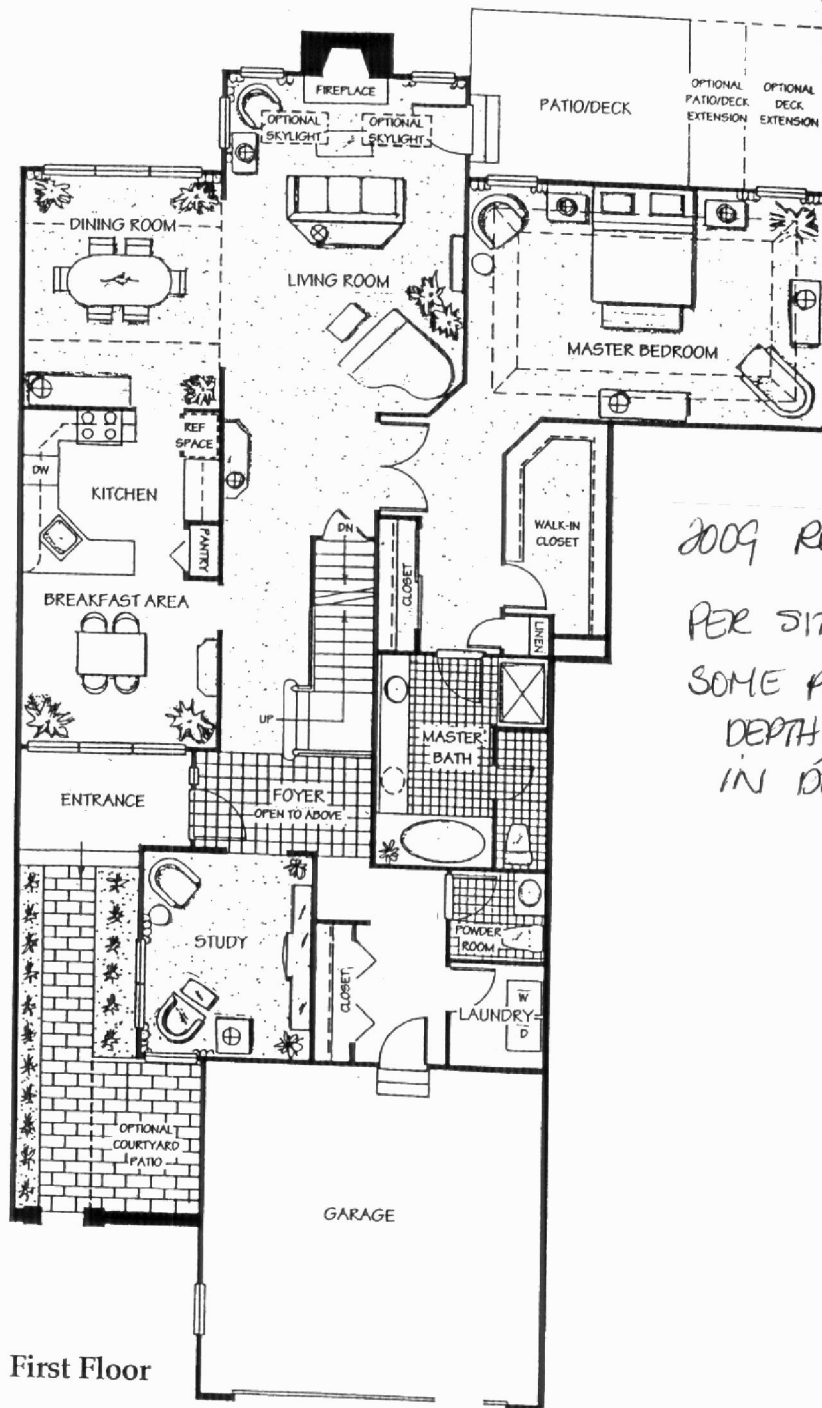


# The Cambridge

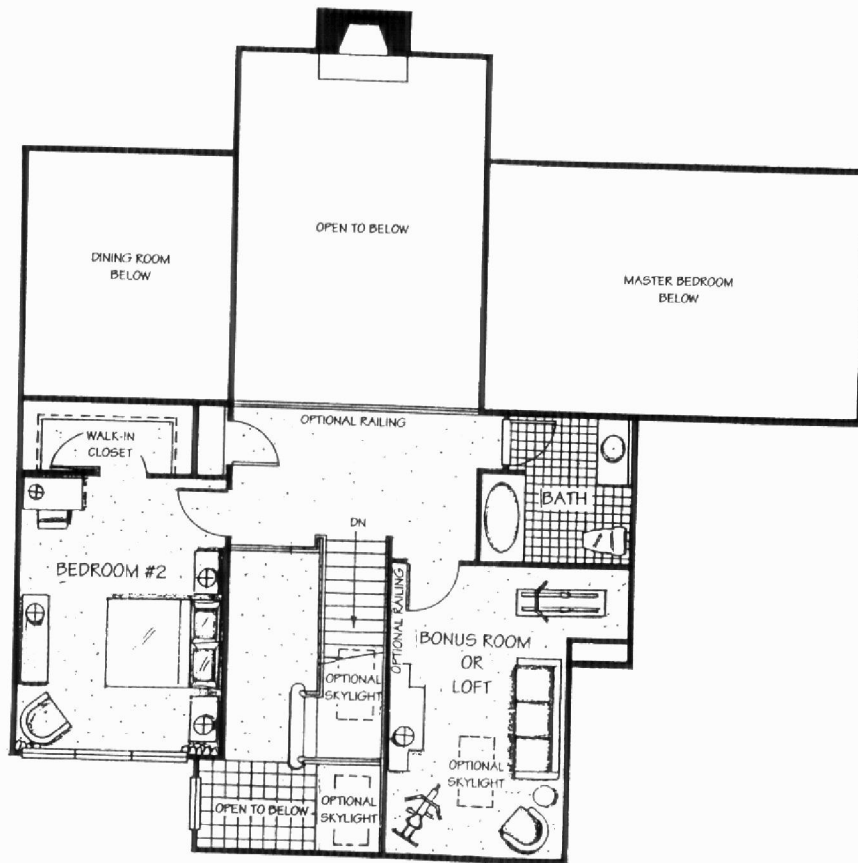


First Floor

2009 Re: CAMBRIDGE II

PER SITE INSPECTION:  
SOME PATIOS 10' IN  
DEPTH; SOME 13'  
IN DEPTH.

Artist's renderings and floor plans may contain or show optional extras not included in model base price. Elevation details, floor plans and room dimensions are approximate and subject to field variation. We reserve the right to make changes in design, terms and products without notice or obligation.



**The Cambridge II+**  
**Second Floor**

LIVING ROOM .....	14'1" x 19'1"
DINING ROOM .....	11'6" x 13'1"
KITCHEN .....	11'6" x 10'0"
BREAKFAST AREA .....	11'6" x 9'8"
STUDY (FIRST FLOOR) .....	10'1" x 12'5"
MASTER BEDROOM .....	21'2" x 13'11"
BEDROOM #2 .....	11'6" x 15'8"
BONUS ROOM (CAMBRIDGE II+) .....	10'0" x 16'4"
BEDROOM #3 (CAMBRIDGE III) .....	15'5" x 12'5"
TOTAL LIVING AREA - CAMBRIDGE II+ ... 2607 SQ. FT.	
TOTAL LIVING AREA - CAMBRIDGE III ... 2897 SQ. FT.	



**The Cambridge III**  
**Second Floor**